



tyra

A modern personal lift

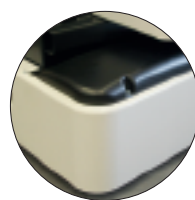
The wheels are rolled into the lift and further into position with minimal manual effort. The working height is always correct for storage and retrieval: during loading and unloading, as well as in raised or lowered position. The lift can accommodate one person and four wheels. It raises the platform to a height of 3 meters and it can be safely moved forwards and backwards in a fully raised position. The lifting / lowering function on the lift table ensures ergonomics, regardless of whether one or four wheels are in the lift.

Tyra is extremely easy to use and manages with an aisle width of only 80 cm. It can be controlled with a one-hand joystick. After completion of the activities, the lift is simply connected to a conventional standard socket for charging.



Safety

We thought of your safety when we developed the lift. For this it passed extensive safety-related tests. The speed of the lift can be regulated, so you always have control over it and thanks the chassis and wheel construction all clamping risks are excluded.



Flexibility

We know that the premises you use are often restricted. That is why we have developed a lift with direct driven electric motors so that it can be driven by you at low speed under full control. The dimensions and weight of the lift are adapted to standard doorways and passenger lifts in buildings, so that they can be passed or driven on. This allows you to maximize the possibilities of the lift in order to meet all conceivable requirements in the different premises, floors and within a building may occur to meet.



Quality

The lift is produced in Sweden as well as all associated components for the control and the quality assurance. The lift is built for operating from morning to night and every component is carefully designed and selected based on these tests.



tyra

A modern personal lift

Manufacturer	Eletec AB
Model	Tyra
Chassis size	1290x780 mm
Platform size	600x450 mm
Max. load, incl. driver	220 kg
Number of people on platform	1
Transport height	1950 mm
Lifting height	2,95 m
Lifting speed to 2,95 m	11 s
Driving speed lowered / raised platform	4,5 km/h / 1 km/h
Power source	Battery 70Ah C20 (up to 220 Ah optional)
System voltage	24 V
Battery charger	24 V/11 A, 230 V 50 Hz/60 Hz
Drive	DC Motors, 2 x 500 W
Height of platform railing	1100 mm